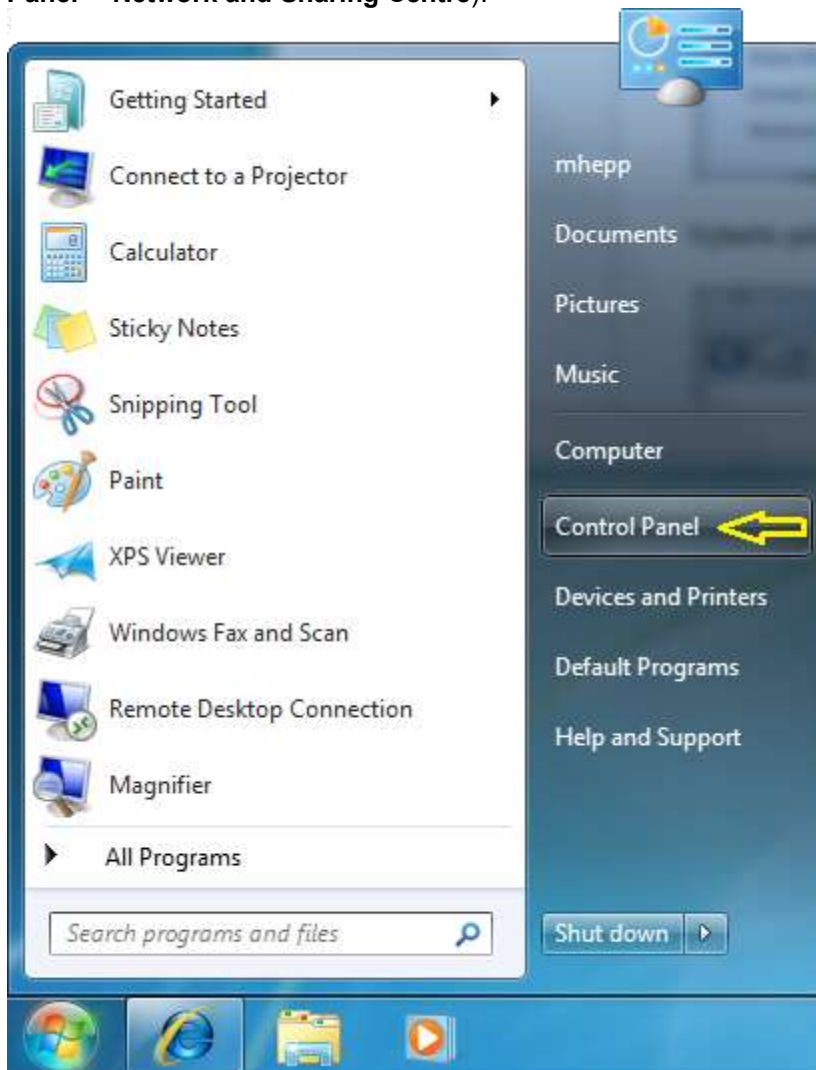


Connecting to the Eduroam Network at JAMU v Brně

Setup instructions for connecting Windows 7 to the Eduroam network at JAMU

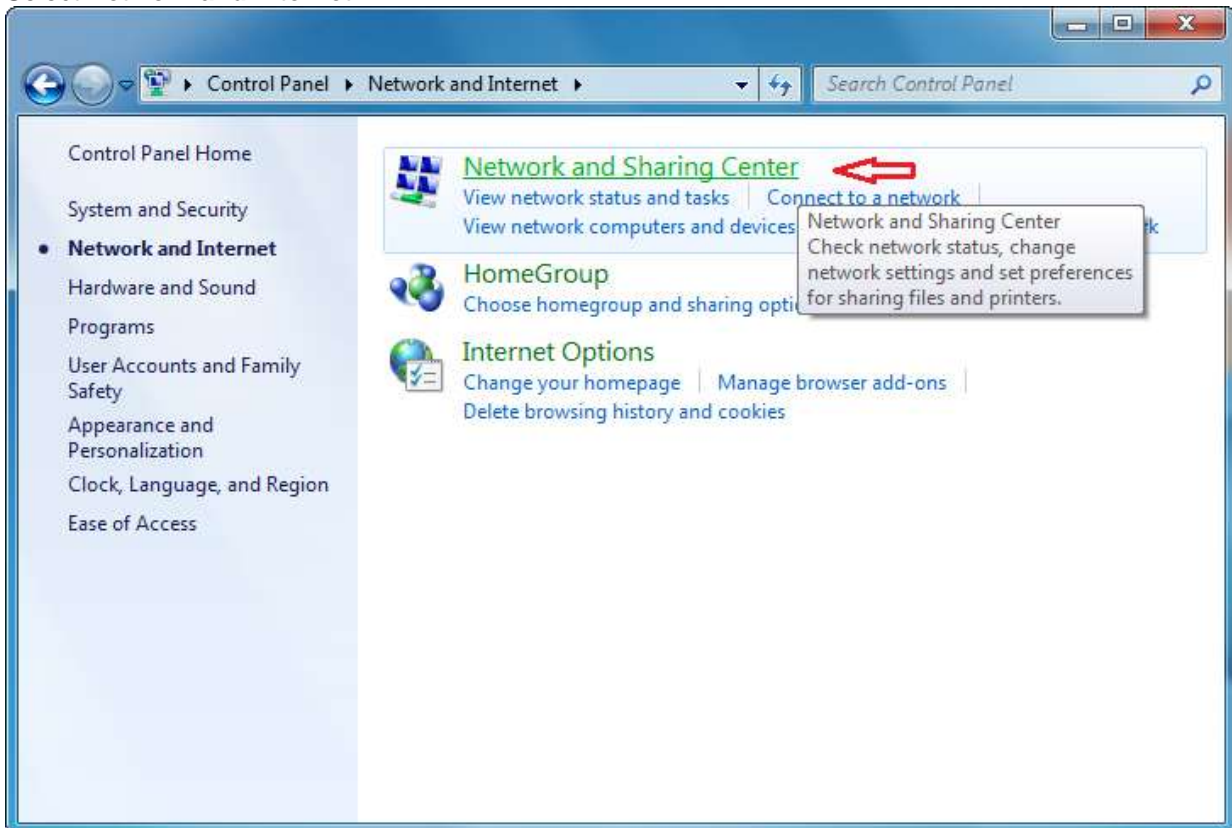
A lot of laptops have a switch which enables or disables the wireless network adapter. Make sure the wireless network adapter you are using is enabled. Run Network and Sharing Centre (**Start**→**Control Panel**→**Network and Sharing Centre**).



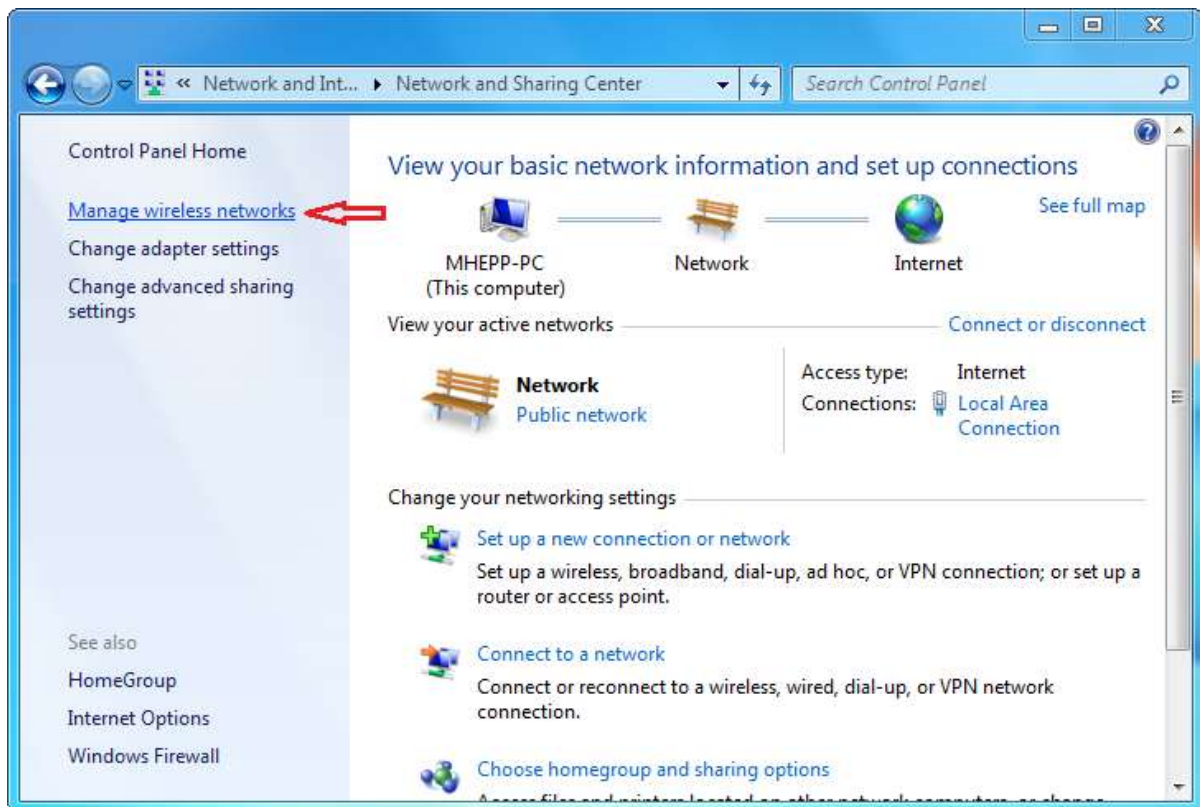
Click on **Start** and select **Control Panel**



Select **Network and Internet**



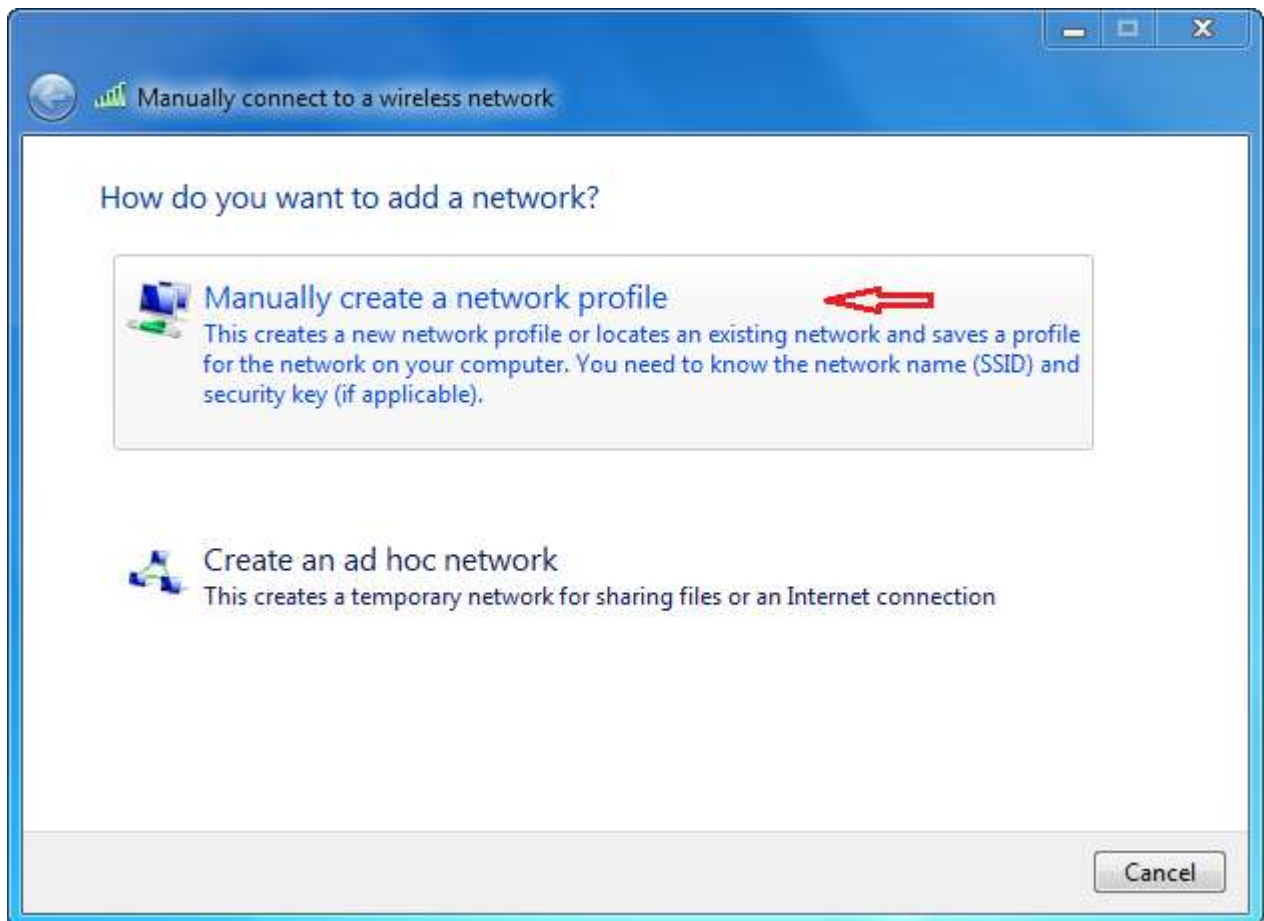
Click on **Network and Sharing Center**



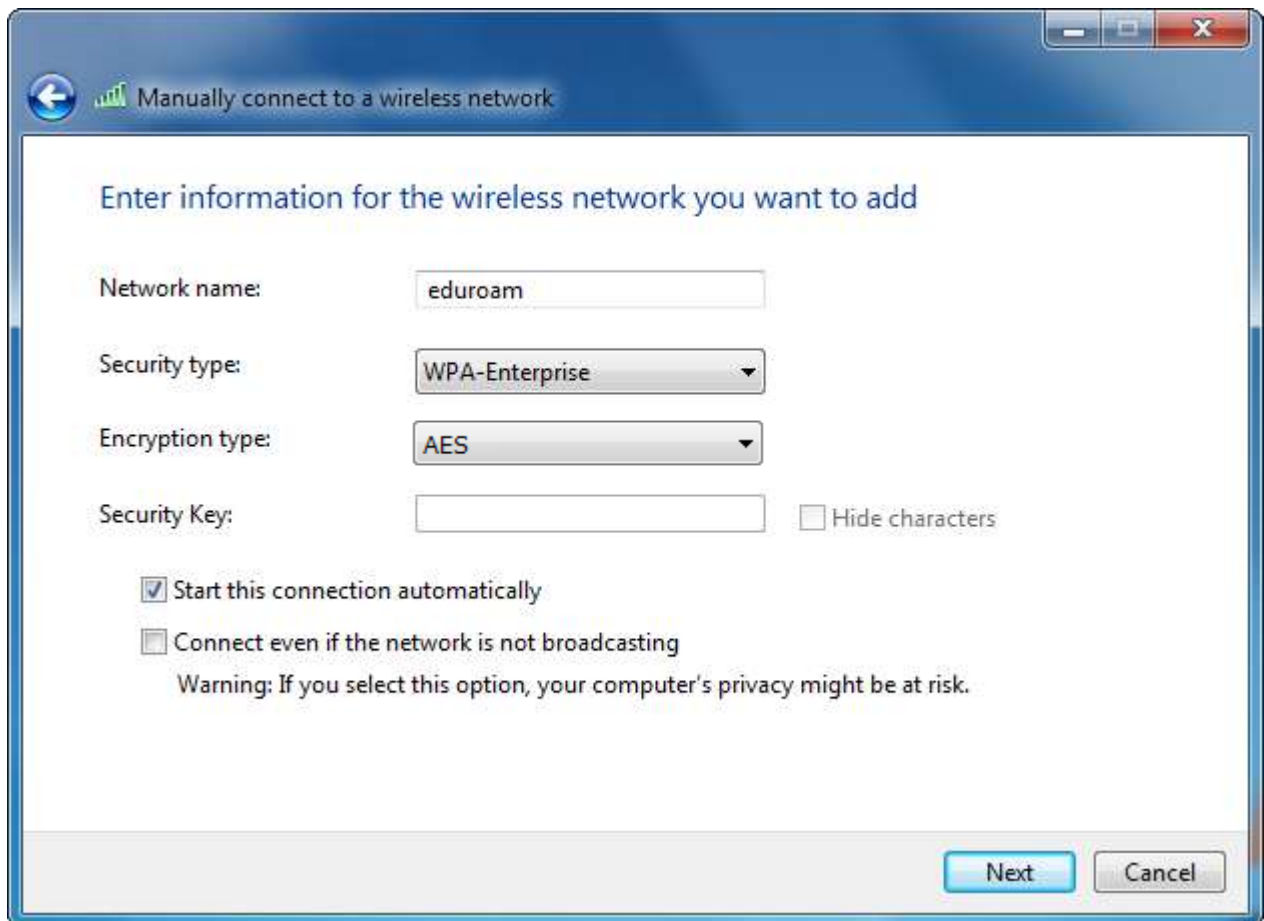
Select **Manage wireless network**



Click on **Add**



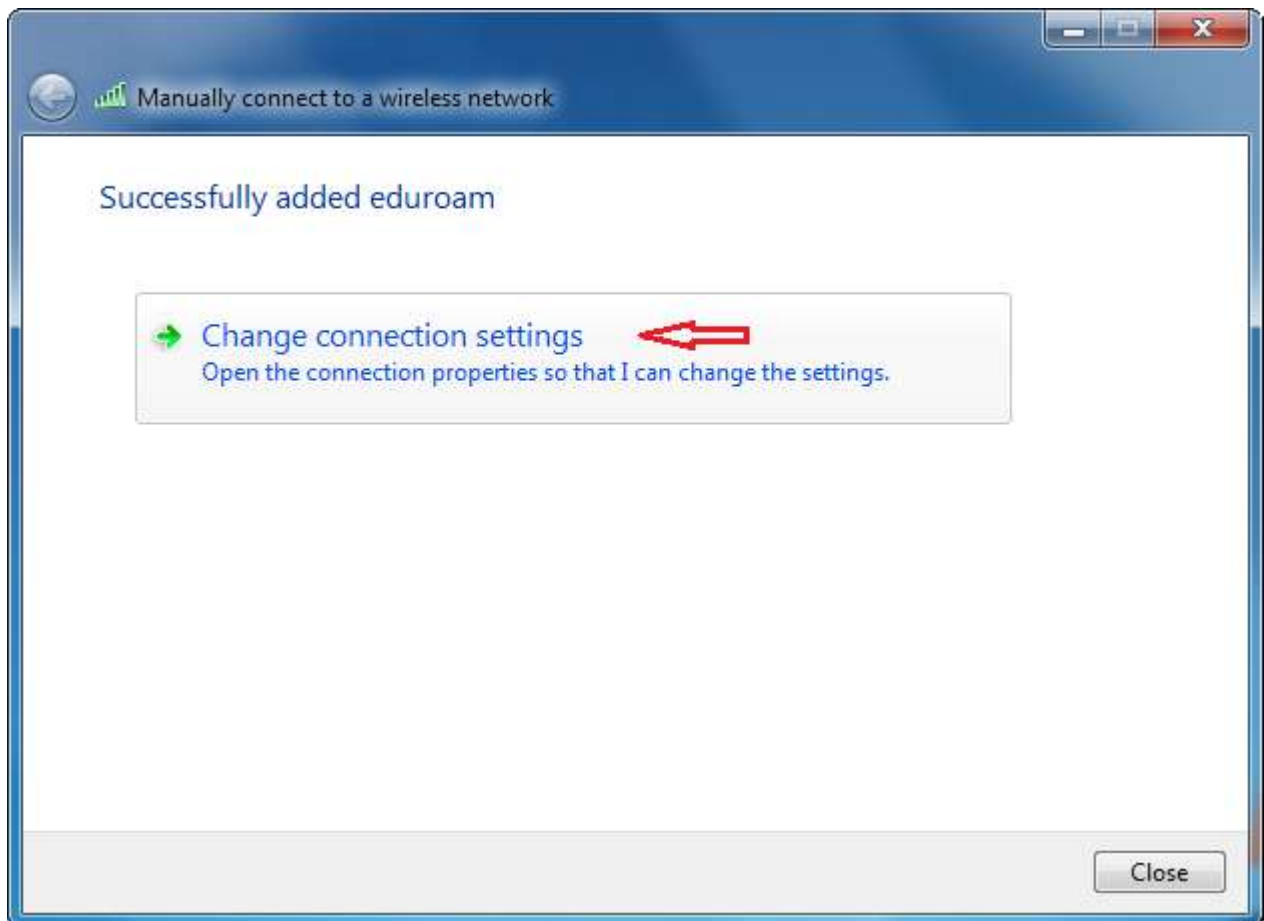
Click on **Manually create a network profile**



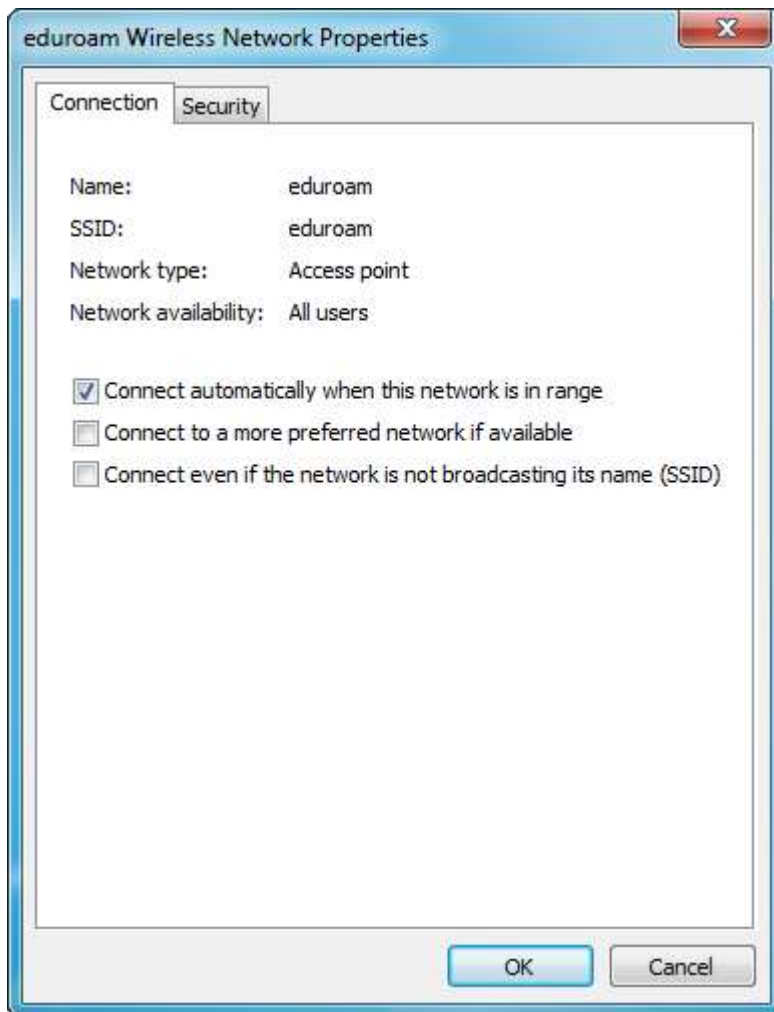
In the following window set up:

- Network name: **eduroam**,
- Security type: **WPA-Enterprise**,
- Encryption type: **AES**,
- turn on **Start this connection automatically** according to the picture below.

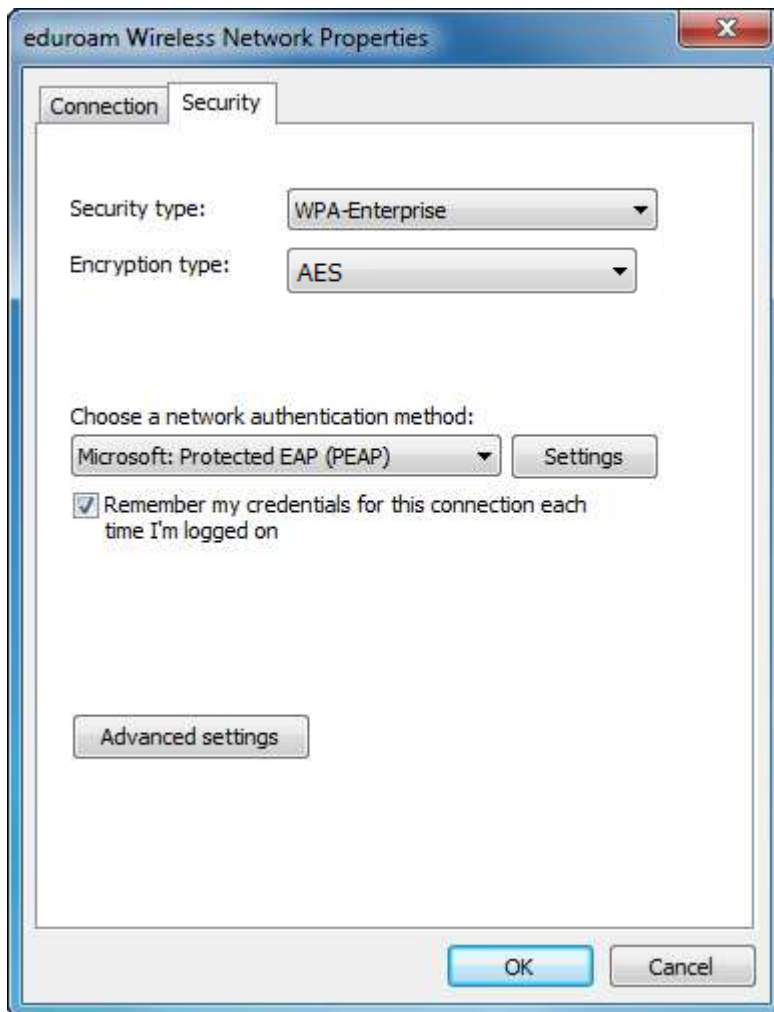
Then click on **Next**



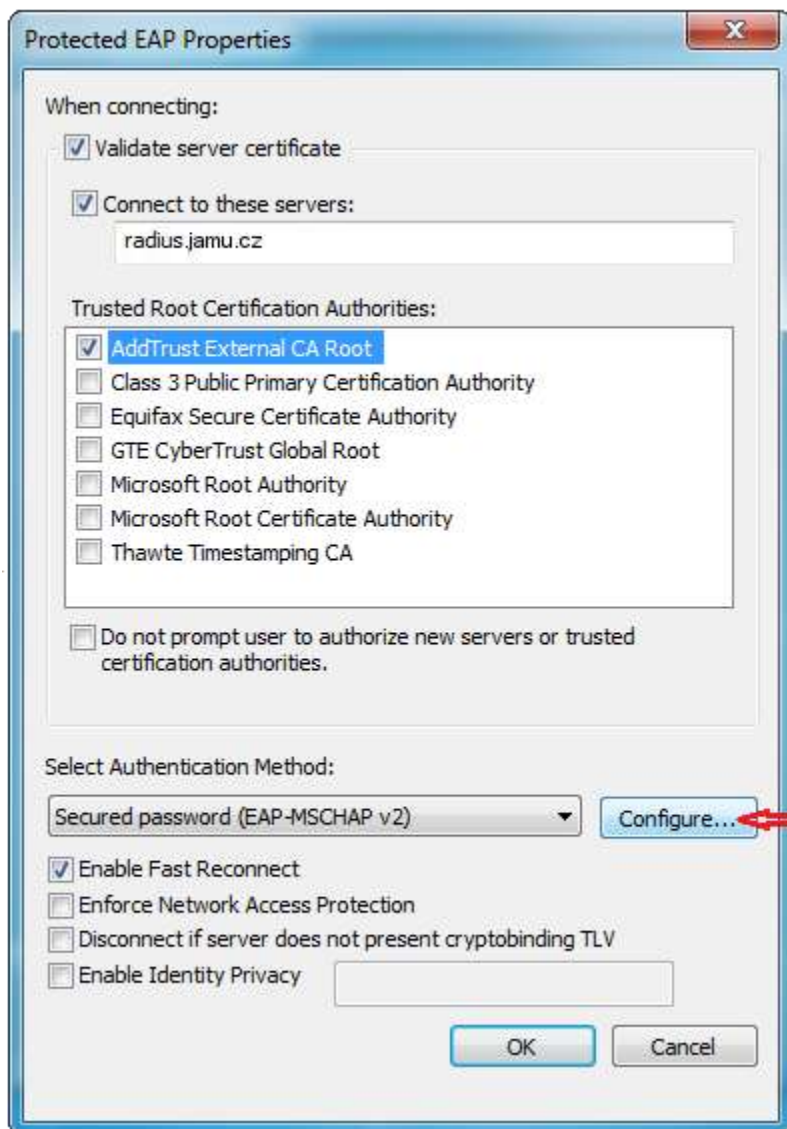
Click on **Change connection settings**



Settings on the tab **Connection** are without changes. Set the tab **Security** according to the window below...



...and click on **Settings**.

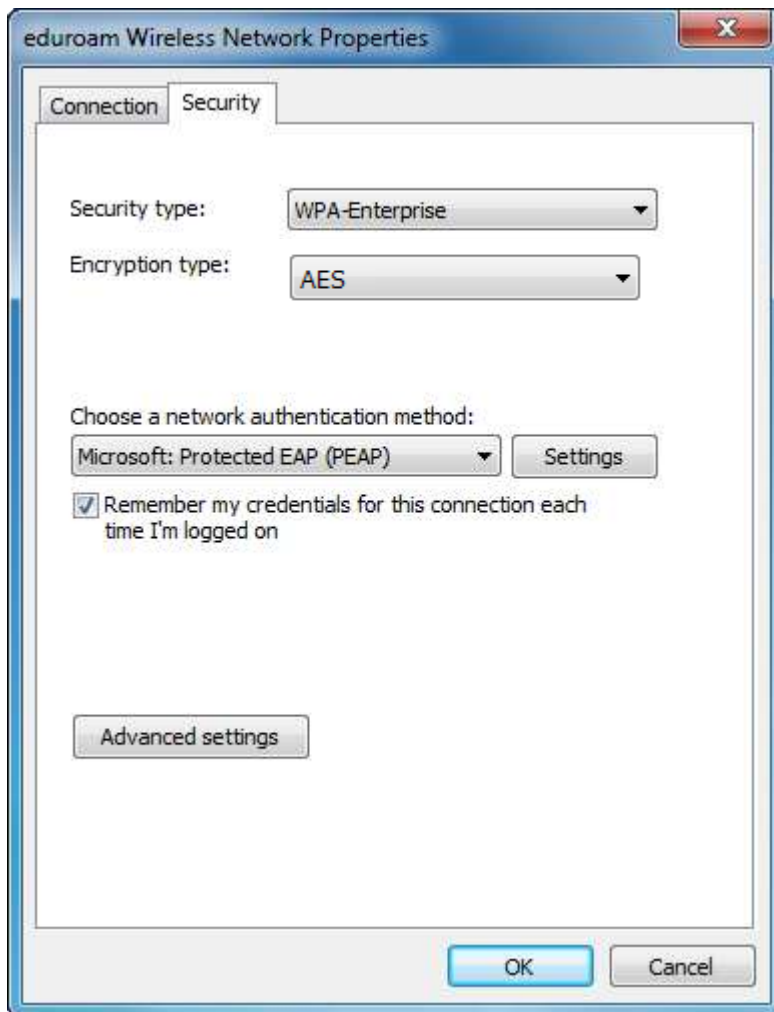


- Click on **Validate server certificate**
- Click on **Connect to these servers:**
- Fill in **radius.jamu.cz**
- Select **AddTrust External CA Root** in **Trusted Root Certification Authorities**

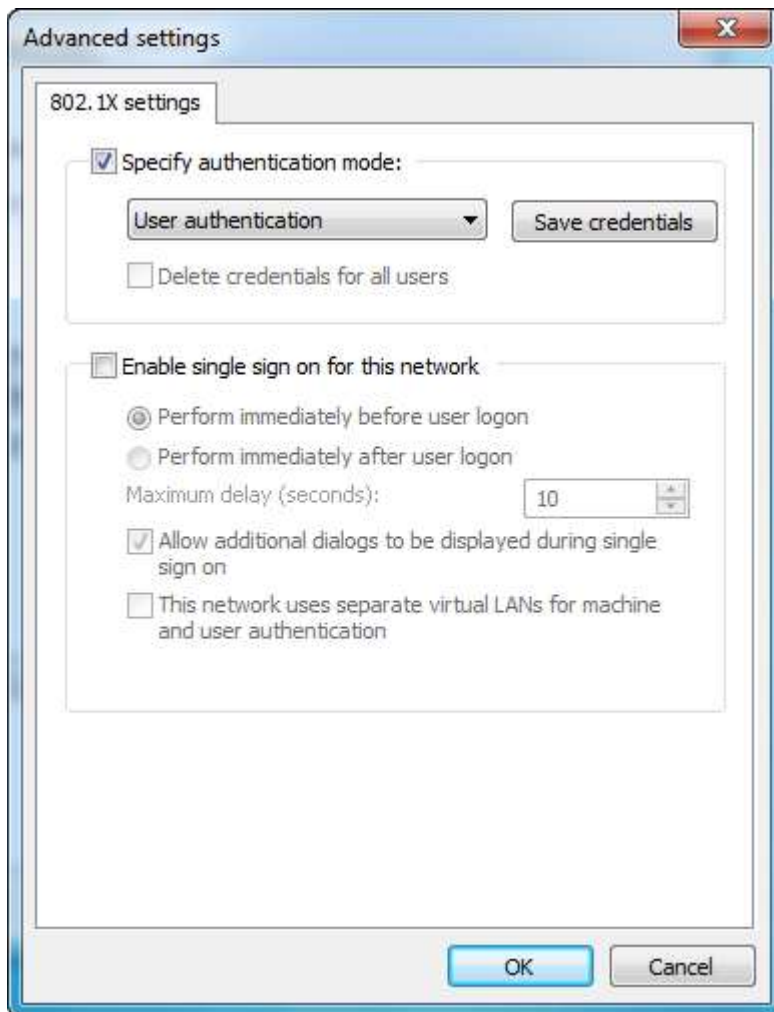
Then click on **Configure...**



Unselect **Automatically use my Windows logon...** and click to **OK** and **OK**.



After a return to the tab Security, click on **Advanced settings** and set it up according to the picture below.



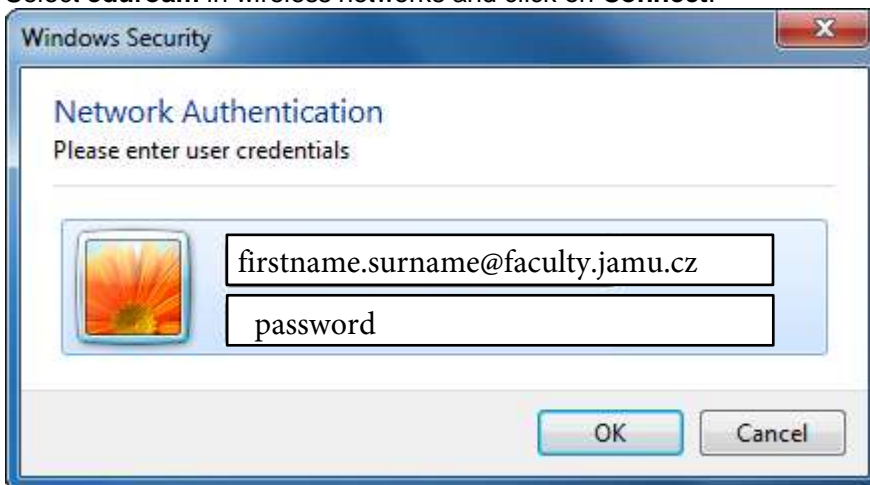
Turn on **Specify authentication mode** and select **User Authentication**.

Click to **OK** or **Close** buttons until all configuration windows are closed.

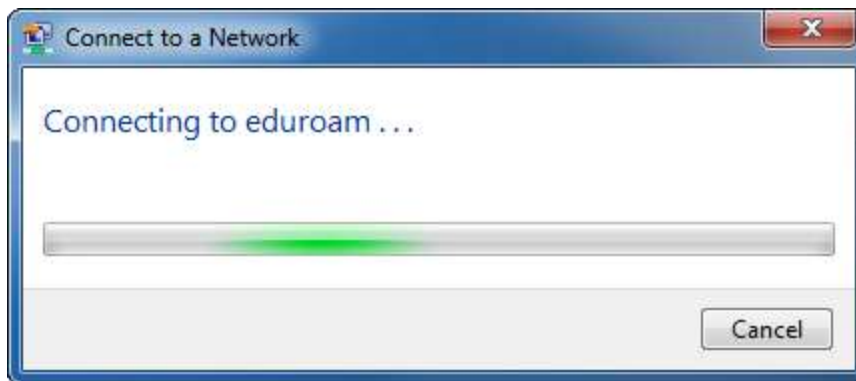
In toolbar click on the icon Network connection and you can see the connection status.



Select **eduroam** in wireless networks and click on **Connect**.



You will be asked to enter user credentials. Enter your name and password.



Finally you will be asked to select connection profile. For your own security select Public Network.



The setting is finished. Enjoy the connection to the services of the computer network.