

Nastavení MS Windows XP pro připojení do Wifi sítě eduroam

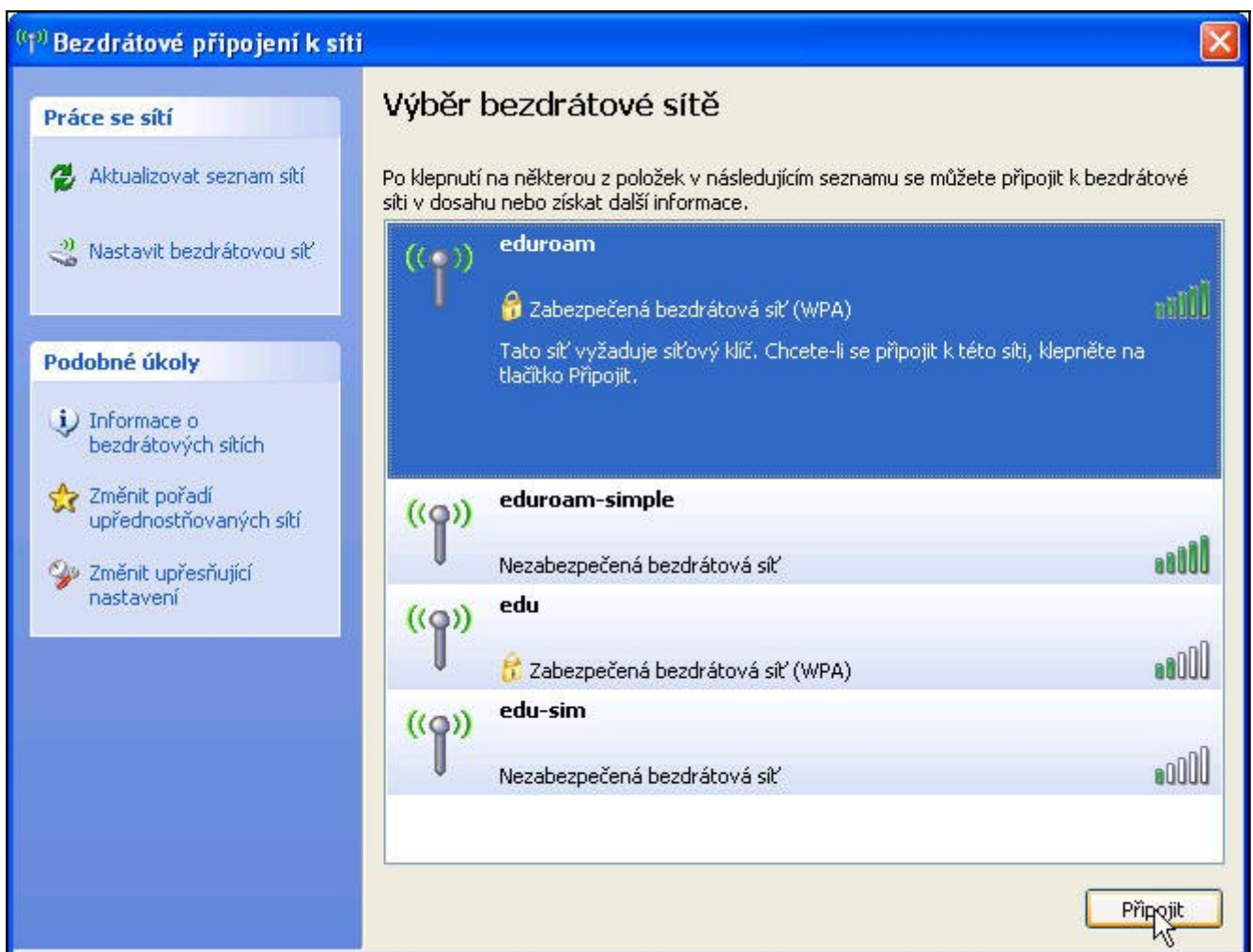
The following settings are proven, with Windows XP in the latest version (servispack3) . Forward Please note that it is highly advisable before starting the install configuration Last servispack (recommended SP3 , requires at least SP2) , and any patches of course the latest version drivers for wifi adapter.

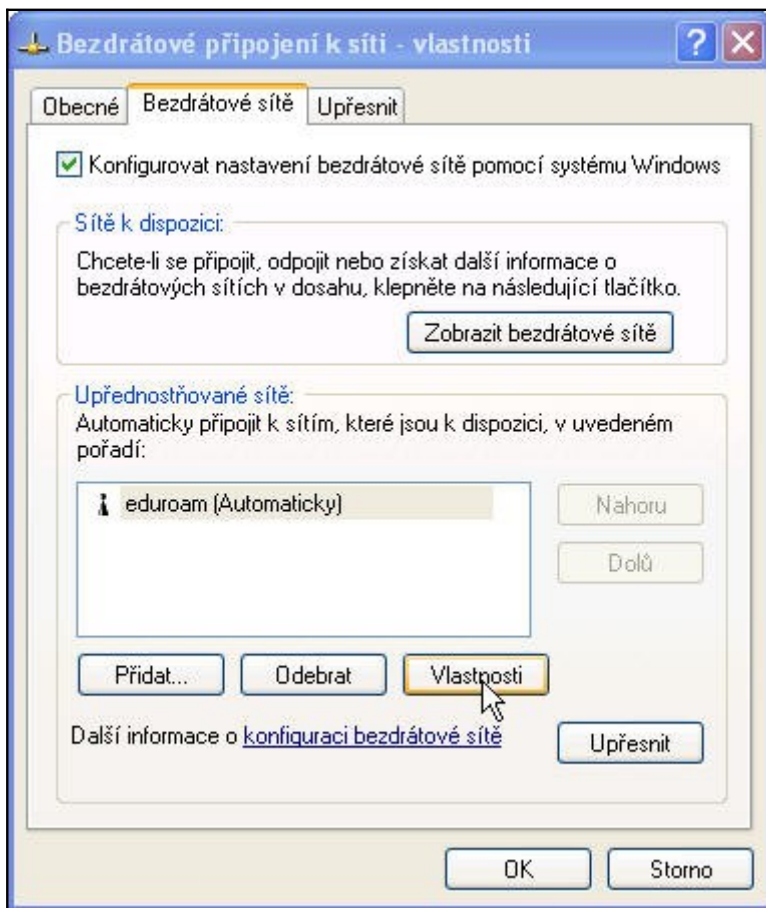
This guide will attempt a simple form to guide and beginners to successfully connect to Wifi network eduroam at the pit. It should be noted that the connection is not trivial and requires more steps than conventional home Wifi implemented on the device for a few bucks . Our goal is not to complicate users work, or to deny access . We aim to maximize user safety under all circumstances.

Furthermore, we should add that all movements in the Wifi network are monitored and in the event of abuse network usage JAMU will be " naughty " users banned .

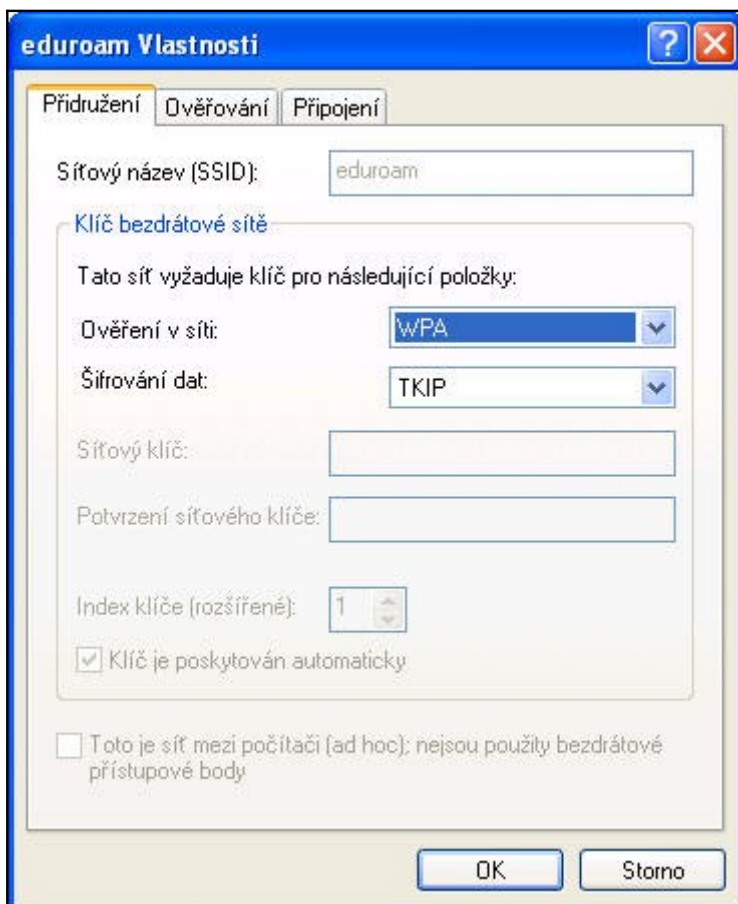
If you have everything you need ready, you can set up access to the network . If you are in range of a network, you can use the Auto Network Search option available from the View Available Wireless Networks (the icon in network connections, or the bar). Double-click on eduroam line or by selecting and Press the Connect button and to try to connect to the network .

Although the connection fails, but is detected by setting the encryption mechanism and other items are set to default values that need to change. Use the Change advanced settings on the left sidebar.





Choose from the list of eduroam and press Properties make adjustments configuration.

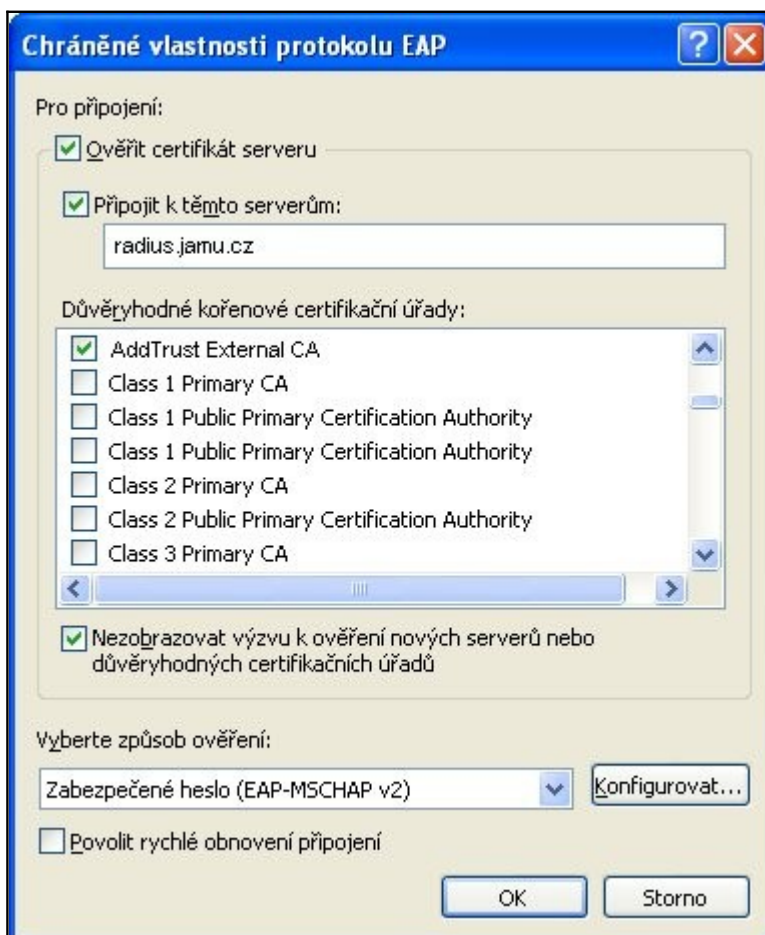


On the **Association** tab, select the method of data encryption. If you have found the network in the list and let her join command, there are already set to the correct value. The eduroam is used to set basic WPA + TKIP. These values are set even if the network is not available, or the system is not identified correctly.

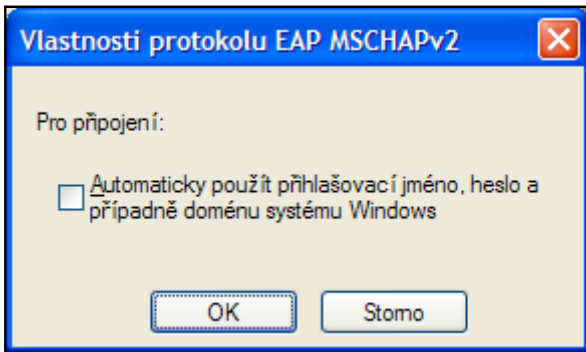
Move to the Authentication tab. The log types, select the type PEAP. Continue pressing the **Properties** button. Move to the **Authentication** tab.



In this window you need to set the correct certification authority and fill in the authentication server. As an authority we choose **AddTrust External CA** and box Connect to these servers fill **radius.jamu.cz** according to specifications. Continue clicking on **Configure**.



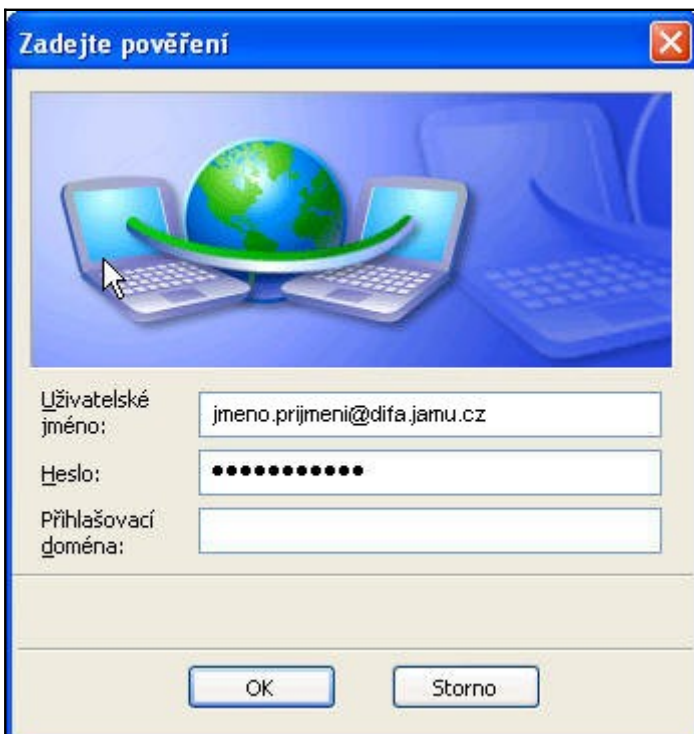
ATTENTION, VERY IMPORTANT! You need to **uncheck Automatically ...** If not, Windows will attempt to connect the currently logged in user, which typically is not identical with the user eduroam Wifi network.



The network is set up and confirmation of dialogues to return to the Network Connections. Here, by using the **View Available Wireless Networks**, find out if the configured network is in range. If so, select Connect. After a little while, "thinking", the system tells you about additional information. Click the balloon to invoke the dialog box.



Enter the user name in the form `firstname.surname @ fakulty.jamu.cz` - it is a school email address, which each received during registration. The staff and teachers use mail in the form `surname@jamu.cz`. Then enter the password and confirm.



After a successful login, WinXP saved username and password, so that next time you connect you do not have to enter it again. This is done automatically and cannot prevent it. If you do not have login information permanently stored, either for safety reasons or because the computer is used by more people, you have to delete the data from the registry:

- Click **Start** and select **RUN...**
- In the Open box: type **regedit** and click **OK**

- Locate the key **HKEY_CURRENT_USER \ Software \ Microsoft \ EAPOL \ UserEapInfo** and click on it.
- In the Edit menu, click Delete Click Yes to confirm the deletion of key. Close the Registry Editor.